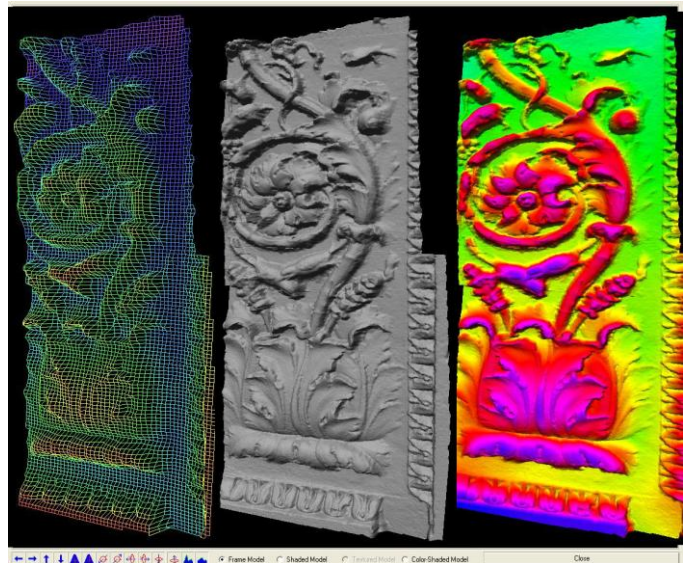


## CLORAMA

**CLORAMA IS A SOFTWARE PACKAGE FOR DSM GENERATION FROM ORIENTED TERRESTRIAL IMAGES.**

The main features of CLORAMA v.1.0 are:

- ✓ Project and data management tools
- ✓ Image display and roaming in mono and stereo modes
- ✓ Preprocessing for radiometric enhancement
- ✓ Derivation of epipolar images
- ✓ Automated DSM generation with advanced multi-image matching
- ✓ Matching results control in stereo mode



The multi-image matching combines several matching algorithms and works on pairs, triples or entire image blocks. The package has been adapted and modified from the SAT-PP software and has proven its quality and performance in many Cultural Heritage projects.

